

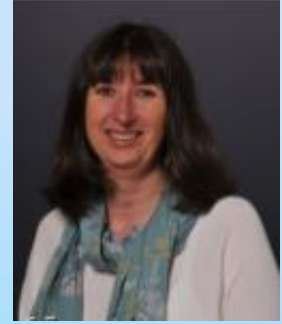
Thakeham Primary School

Open Event for Prospective Parents (September 2021)



Headteacher: Mrs Sam Norton

Welcome to Our School!

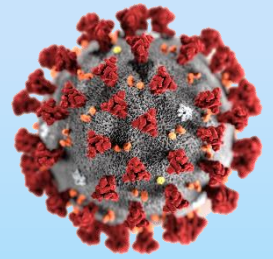


- We've taken the difficult decision not to hold our usual Open Events this year due to Covid-19.
- Instead we have a number of ways in which you can get to know us a little better, whilst keeping you and our school community as safe as possible.
- We hope you will find information in this presentation useful, it will provide you with a flavour of our school.
- Join us for a virtual tour of the school – a video will be available shortly where you can take a look around the school, meet staff, pupils and parents and hear from our Chair of Governors.
- We will shortly publish a link on our website to access the virtual tour.
- If **after** having seen our powerpoint presentation and video, you have any questions, please send these through to the office. We will post answers to FAQs on our website and update these weekly.

External Visits

- We will be hosting a limited number of external visits after school with groups of 4 adults (one parent/carer only and ideally without children if possible to keep numbers low).
- You will be able to meet the Headteacher and key teaching staff. You will be able to see into each classroom and hall from the external doors around the school. The only area you won't be able to see is the school library and cookery room (partly due to window replacements to the western elevation of the school). The video however will show you these anyway.
- To book a place on the tour please contact the school office. You will be asked to follow our Covid-19 protocols by wearing a face covering (unless you are exempt), sanitise hands on arrival and you will be asked to confirm you are not experiencing Covid-19 symptoms and that you are not in quarantine for Covid-19 related reasons. We will require you to maintain social distancing rules throughout your visit.
- Please note as these are external visits, you need to come prepared for any type of weather!

Keeping Everyone Safe



- We have a rigorous risk assessment and set of protocols in place in line with guidance from DfE/PHE and WSCC to limit the transmission of Covid-19.
- The children, staff and parents have responded well to these new routines and expectations.
- See our website for details of our risk assessment and protocols.



Our Journey



Thakeham Primary School was first established in 1875! The school was first sited in the heart of Thakeham Village before moving to our current site in 2017 following WSCC's change to the age in which children transition school in our area.

We now occupy the same campus as a Y7/8 satellite of Steyning Grammar School and over the past 3 years, have continued to build strong relationships with SGS for the benefit of our children and staff.

“Small School, Big Opportunities, Great Achievements”

We still remain a small, friendly village school but have the advantage of the facilities and resources that our newly refurbished building and wider site bring. We have maintained our community links with Thakeham but developed these to include those with neighbouring Storrington.

The change to becoming a Primary School and our re-location have both served to strengthen the broad range of opportunities available to children which have supported their achievements and outcomes, true to our school's motto!

I am proud to lead our thriving school, where I have been Headteacher for the past six years alongside an excellent team of staff, governors and parents.

Small School, Big Opportunities, Great Achievements

What are we aiming for? What do we want for our children?

Our School Vision.....

High quality learning and teaching are at the heart of our school. We nurture and celebrate each child's **individual talents and skills** to enable them to be **happy, confident** and **resilient** individuals with a **passion for learning, inspired to achieve** their very best. Through encouraging a strong sense of **respect** and **responsibility**, both within our local **community** and the wider world, we support our children to be **co-operative, caring** citizens for the future.

“You have engaged staff, parents, carers, pupils and governors in developing a very clear vision and ethos for the school. You have built a strong staff team whose members are equally committed to and proud of the part they play in the school”
(Ofsted July 17th 2018)

THAKEHAM PRIMARY SCHOOL

‘Small School, Big Opportunities, Great Achievements’





Our School



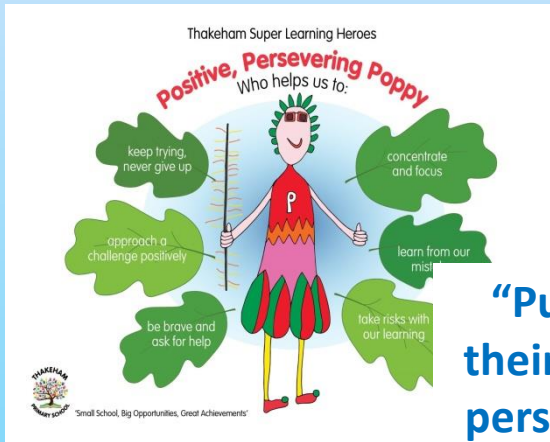
Sept 2019

- We have 103 pupils on roll, our pupil admission number for each year group is 15 (capacity of school = 105)
- We have 4 classes (which the children named themselves when we became a Primary School):
 - ✓ Acorn (YR)
 - ✓ Oak, (Y1/2)
 - ✓ Maple (Y3/4)
 - ✓ Elder (Y5/6)
- Despite our re-location, our catchment area remains the same. WSCC are the admission authority
- Pupils currently attend from Thakeham, Storrington, West Chiltington, Ashington and surrounding areas.

Teaching and Learning

- The organisation of our classes fit well with the English National Curriculum and Key Stages.
- Acorn (Reception Class) follow the Early Years Framework and are taught as a class with a maximum of 15 pupils.
- Our other 3 classes are organised in line with the National Curriculum Y1/2 (Oak), Y3/4 (Maple), Y5/6 (Elder) with classes of around 30 pupils.
- Sometimes the teacher leads a whole-class input with differentiated questions and then children work at their year group/ability level at their tables.
- On other occasions one year group may have a teaching input specific to them whilst other year group work on focussed task with TA and then swap over.
- Differentiation and knowing our children is key, which in our small school is easy to do!
- This year we have begun an exciting initiative with our year 1s and 2s receiving separate English and Maths teaching and learning for 3 out of 5 days of the week.
- However we group our children, **teaching and learning expectations are high, we focus on igniting imagination, developing a love of learning and ensuring they make good progress.**

Learning is for life



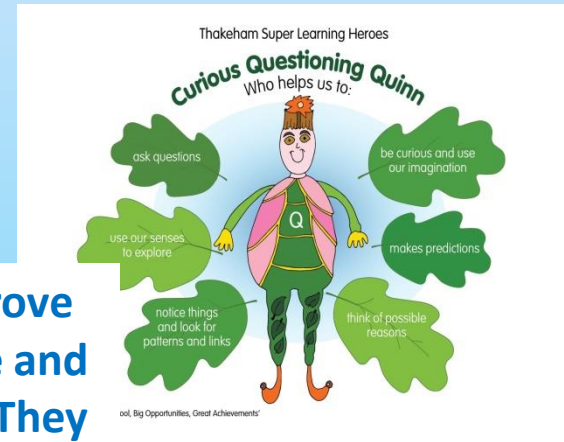
Perseverance

Curiosity

“Pupils at the school know how to improve their work and how to develop resilience and perseverance when work is challenging. They have created ‘super learning heroes’ cartoon characters to remind them of the characteristics of successful learners, and they talk confidently about the learning behaviour they have demonstrated when sharing their work. “

(Ofsted July 17th 2018)

Reflection



Care (Respect)

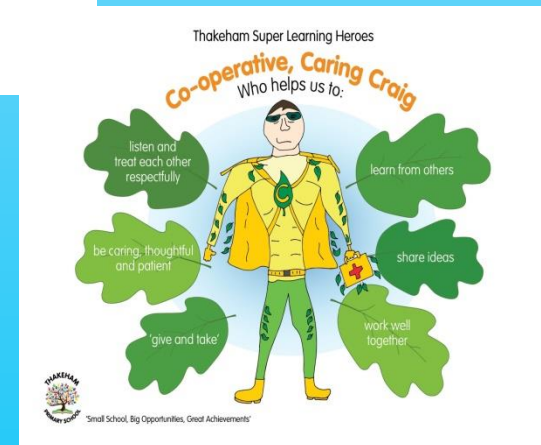
Co-operation

Responsibility

Honesty



Values



At Thakeham as a Small School we offer the following opportunities.....

- A great start to school – maximum class size of **15** in Reception.
- The opportunity for children to develop in **confidence**, form **positive relationships** and learn in a small **‘family’** style setting.



“A particular strength of the school is the care the older pupils take of the youngest children, for example as reading buddies or playleaders. They also take seriously other responsibilities, such as looking after the library or being computer monitors.”

(Ofsted July 17th 2018)

- **Nurturing environment – care**

“The school puts great emphasis on emotional resilience and developing pupils’ abilities to care for themselves and one another. Pupils say they feel safe and that there is always an adult they can talk to in school if they have concerns. “

(Ofsted July 17th 2018)

- Focus on **individual needs with support and challenge to flourish.**
- **Quality teaching and learning**, high expectations – a renewed focus on ‘**challenge**’



“The vast majority of pupils who started the school in Reception make excellent progress and achieve in line with, or above, national expectations at the end of each year in key stage 2”

- **Inspiring, enthusiastic** and **skilled** teachers and teaching assistants.

“Teachers are enthusiastic and highly committed, always seeking ways to improve and to bring out the best in every learner.”

- **Creative curriculum** opportunities with **inspiring visits and visitors**, continuous reflection and improvement.

“You are developing a skilled team of subject and senior leaders. Leaders at all levels monitor their subjects carefully to check pupils’ progress. There is a sense of excitement about developing their own expertise, always striving to do things better.”

(Ofsted July 17th 2018)

- **Happy children!**

“Pupils love coming to school.....Pupils were at a loss to think of ways in which the school could be better, and said that they enjoyed ‘pretty much everything’.”

“Pupils say they find lessons ‘fun and interesting’. Purposeful links are made between subjects”
(Ofsted July 17th 2018)

- Strong home-school relationships – focus on **‘whole’** child.

“Parents love the ‘welcoming, friendly feel and general air of happiness’ in the school..... Parents commented very positively about the good communication between home and school, as well as the joy of seeing their children become happy and successful learners. “

(Ofsted July 17th 2018)

- **Great adult to pupil ratios** with a **Teaching Assistant in each class**, at least every morning and across some afternoons.
- **Fantastic resources and facilities on site, whole-school refurbished 2017.**
- ✓ Access to sports facilities: fields, MUGA, playground, large purpose built hall, MXT swim school
- ✓ PE taught by SGS teachers alongside our own teachers Y1-6 - expertise
- ✓ Forest Schools area
- ✓ Cookery room
- ✓ Support areas
- Healthy budget so ongoing, targeted investment in teacher training, resources and school development.

- **Wide range of before/after-school clubs** e.g. Pottery, Sports, Cookery, Choir – most Sports clubs are funded.
- **Music tuition:** this is currently online to keep everyone safe. In ‘normal times’ children access piano, drumming and brass lessons with opportunities for collaboration with other schools and for projects within the community. We have a Music specialist on the staff team.
- **Committed Governing Body**

“Governors bring a wide range of skills to their role. They are passionate about school improvement. They visit the school regularly to see for themselves how improvement plans are developing, and to check on pupils’ well-being and safety.
“(Ofsted July 17th 2018)

- **Close links with other local schools the local community** e.g. Church links, Sussex Downs Care Home, Adopt a Street, JRSOs, University of Chichester....

“Links with other schools and the community are strong. Expertise has been shared and developed as a result. Pupils contribute to the life of the community, for example by being ‘reporters’ for the parish news. Links with the adjoining grammar school are developing rapidly, particularly in sport.” (Ofsted July 17th 2018)

- **‘Gold’ Games Award 2018-19**
- **International Schools Award 2018-2021;** links with schools in other countries
- **Partnership work with Steyning Grammar School Teaching staff** across PE, Science, Art and Maths – many more planned!

How is Success Measured?

We measure our success in many different ways:

- Ongoing continuous monitoring of the quality of teaching and learning
- Pupils' engagement in their learning.
- Pupil progress and outcomes in line with national standards.
- Pupil and parent feedback.
- Quality of relationships – between pupils, staff and parents
- Ofsted inspection outcomes.
- Demand for places at our school.
- And.....

The size of the children's smiles!

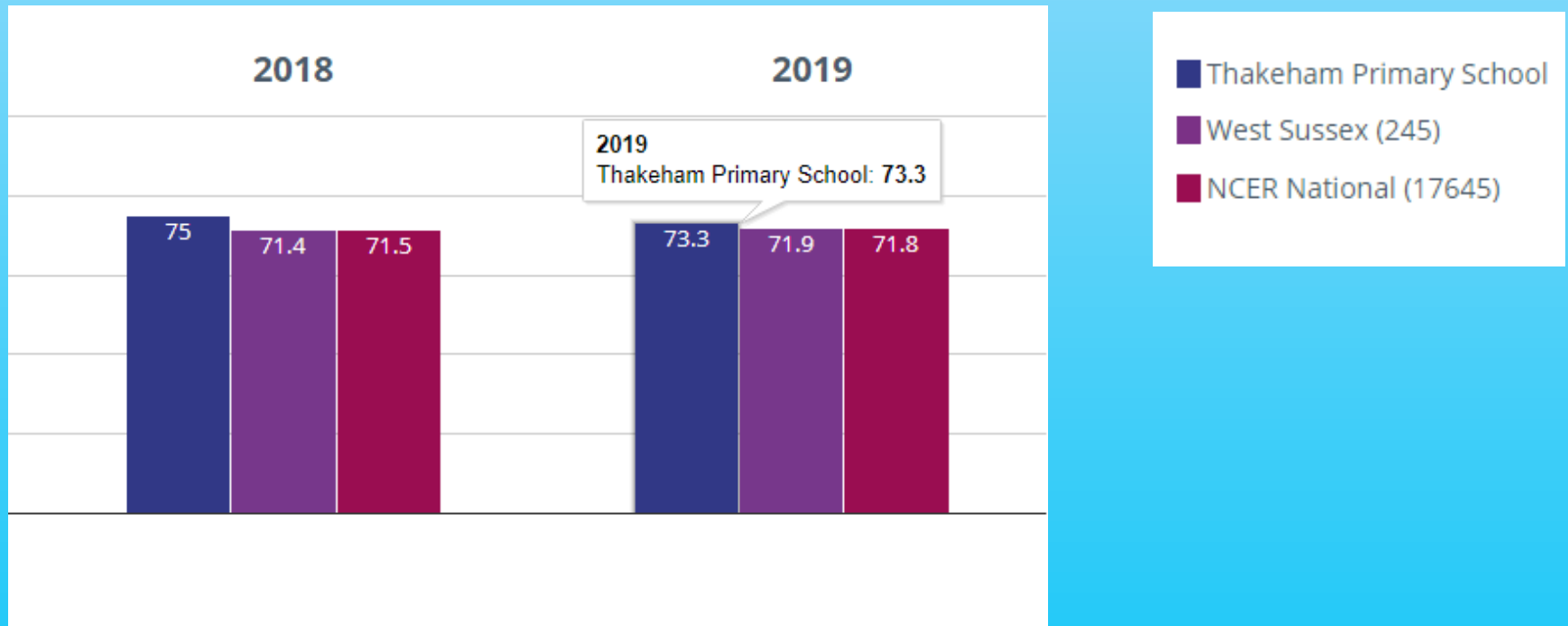


Great Achievements

At Thakeham learning is at the heart of all we do:

- We were recently inspected by Ofsted in July 2018 with a 'Good' outcome.
- We have excellent outcomes and progress for children at the end of Reception:

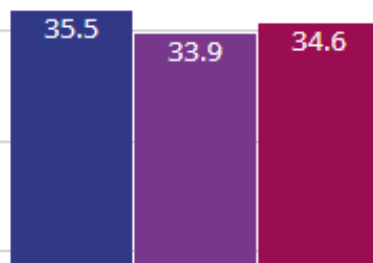
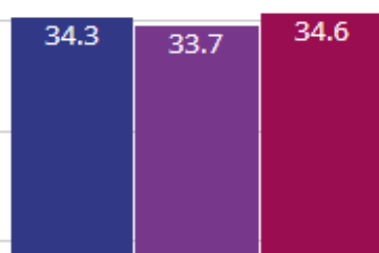
Our children are achieving GLD (Good Level of Development) levels **higher than the County/National average** since we became a Primary.



- Our Average Point Scores (Reception) are at/above County/National averages

2018

2019



35.5 in 2019

1.2 points rise since 2018

5.8 points rise since 2017

■ Thakeham Primary School

■ West Sussex (245)

■ NCER National (17645)

And at the end of Primary School...

Pupil Attainment at the Expected Standard & Average Scaled Scores at the end of Year 6 2019

Subject	Number of pupils achieving the expected standard	% of pupils achieving the expected standard: School	% of pupils achieving the expected standard: <u>Nationally</u>	Average Scaled score: School	Average scaled score: <u>Nationally</u>
English Reading	9/11	82%	73%	104*	104
English grammar, punctuation and spelling	10/11	91%	78%	106	106
Mathematics	9/11	82%	78%	104	105
English writing (teacher assessment)	9/11	82%	78%		
R/W/M combined	8/11	73%	65%		

And at the end of Primary School...

Pupils achieving at Greater Depth at the end of Year 6 in 2019

Subject	Number of pupils achieving Greater Depth	% of pupils achieving Greater Depth: <u>School</u>	% of pupils achieving Greater Depth: <u>Nationally</u>
English Reading	2/11	18%	27%
English grammar, punctuation and spelling	5/11	45%	35%
Mathematics	3/11	27%	27%
English writing (teacher assessment)	3/11	27%	20%
R/W/M combined	0/11	0%	10%



Current Reception Staff 2020



Mrs Hoare

Mrs Stender

- **Acorn staff: Teachers** – Mrs Hoare (Mon-Weds) and Mrs Stender (Weds –Fri)
- **Teaching Assistants:** Mrs Turner (HLTA) Mrs Stickings and Mrs Devereux
- Monday – Mrs Hoare and Mrs Turner
- Tuesday - Mrs Hoare, Mrs Turner and Mrs Devereux
- Wednesday – Mrs Hoare, Mrs Stickings, Mrs Devereux and Mrs Turner in the afternoon.
- Thursday – Mrs Stender and Mrs Stickings
- Friday – Mrs Stender and Mrs Stickings

TA allocation is higher this year due to individual (SEN) needs.
Ordinarily there would be a TA in class for the mornings (at least)



Mrs Devereux



Mrs Stickings



Mrs Turner



Transition



- Teachers liaise/meet with all nurseries/pre schools.
- Early Years profiles are passed on from pre-school and information used alongside the above to begin planning for each child.
- We have undertaken home visits in the past, however this year contact with parents took the form of phone calls to parents (Covid-19 reasons)
- Our teachers created videos of themselves reading stories to the children.
- In June/July we would normally hold 'Stay and Play' sessions (visits) for the children. This year this was organised for September in small groups enabling the children to settle in quickly.

Curriculum Overview

- The Government has consulted on changes to the EYFS statutory framework, including changes to the Early Learning Goals, which will be compulsory from September 2021. We have been invited to take part in the new changes as an early adopter School from 2020. This year, therefore we will be working towards the new Early Learning Goals set. The new ELGs will continue to reflect the broad level of development that children are expected to reach by the end of reception.
- The ELG'S will remain split into prime and specific areas of learning. The prime areas are considered the most significant and underpin all other learning, these are:
 - **The prime areas are:**
 - Personal, social and emotional development
 - Physical development
 - Communication and language
 - **The specific areas are:**
 - Literacy
 - Mathematics
 - Understanding the world
 - Expressive arts and design

Phonics

- Read Write Inc scheme.
- Daily phonics sessions at the children's level.
- Sound reading and writing link throughout the curriculum.
- Reading – we will send home books for you and your children to share (with book quarantine in place!)





Daily Routine

Activity
Self registration Funky fingers
Literacy group work and self initiated activities
Phonics
Break
Maths group work and self initiated activities
Lunch
Specific areas of learning and self initiated activities
Individual Readers
Tidy up, story time and home time

Curriculum

- We will link the topics to the learning within the EYFS and wherever possible, to the children's interests.
- Autumn: All about me
- Spring: Out of this world
- Summer: Moving on and up
- Curriculum Drivers underpin all our topics: 'My Place in the World', 'Inspired Learners', 'Learning for Life'

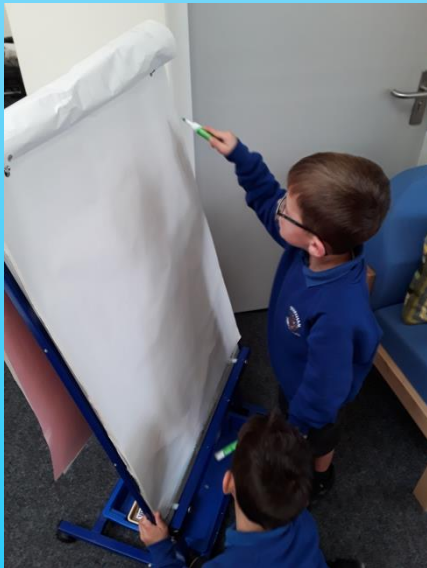


**So many
stimulating
experiences
and
opportunities!**

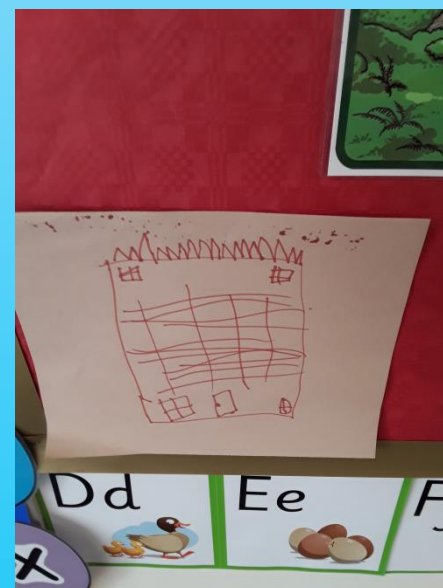


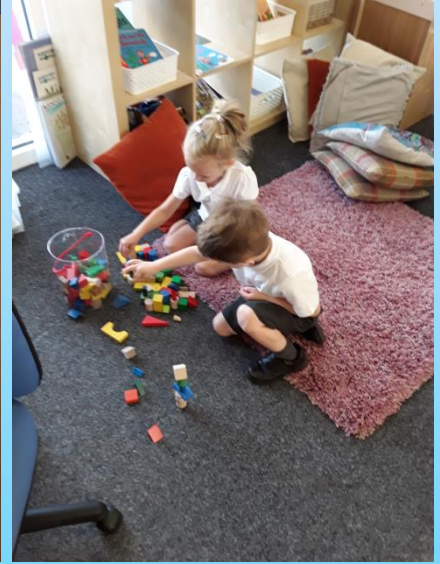
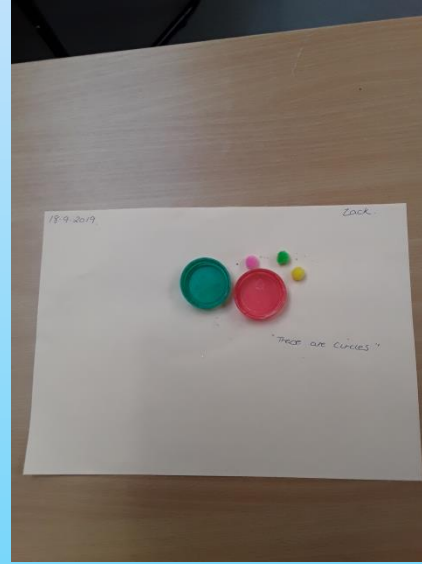


**So many
stimulating
experiences
and
opportunities!**



**So many
stimulating
experiences
and
opportunities!**







What Do Parents Think?

“I’ve been so impressed at the way Thakeham School have dealt with the transition of their new reception children into Acorn class. With the warm, friendly welcome staff give the children at the start of each day, the transition has been seamless. After only 1 week, every child was happily going into the classroom each morning and coming out with the biggest smile on their face. Thank you.”

“My son has settled in really well, he absolutely loves going to school and loves coming home telling me and my husband what he has done and what he has had for school dinners. We highly recommend Thakeham primary it’s such a lovely small school and the staff are so nice and caring. “

"Happy children learn and my children are thriving at Thakeham School. They are taught by professional, energetic and intuitive teachers who really know them as individuals. My children love going to school and feel safe and cared for whilst they are there. Pastoral care is excellent from all staff and my children’s early years in education are instilling in them a natural enthusiasm for learning."

What Do Pupils Think?

I like drawing on the big screen!

I like being really good, then you get to be Star of the Day!



I like playing with my friends!

I like learning things like my numbers!