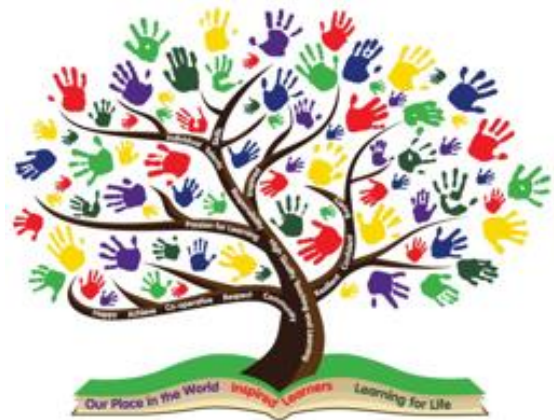


Thakeham Primary
School
Maple Class

Summer Term 2022

Temples, Tombs and Treasures



Our place in the world.
Learning for life.
Inspired learners.

English

This term our key texts will be:

- Marcy and the Riddle of the Sphinx by Joe Stanton
- The Egyptian Cinderella by Shirley Climo

Our writing will be focused on developing cohesion and a greater understanding of purpose, audience and effectiveness. We will produce writing in the following genres:

- Explanations
- Persuasion

Science

Our topics are living things, habitats and food chains.

We will be learning about:

- Classification of animals
- How to recognise positive and negative changes in our environment
- How to construct and interpret food chains
- Investigate whether plants need soil to grow
- Investigate a seed and design our own

Computing

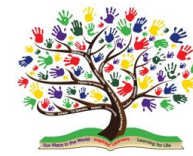
This term we will be focusing on:

- Creating a multimedia e-book
- Comparing digital communication methods
- Understanding and using electronic mail
- Writing code that includes conditional events
- Understanding how a computer stores data.

Maths

Our maths topics this term are:

- Money
- Properties of shape
- Position and direction
- Time
- Statistics



We will continue to consolidate and extend our mental maths skills and calculation formal methods and strategies. We will be working both conceptually and procedurally.

When learning something new we encourage the children to use the CPA approach.

Concrete - using objects and equipment

Pictorial - represent their thinking using pictures Abstract - using numbers and symbols to solve calculations



PE

Monday – Swimming

Tuesday – Rounders (summer 1) Athletics (summer 2)

We also run the Golden Mile twice a week

PSHE - Jigsaw

We will be thinking about and discussing our **relationships** and being a **changing me**

Other highlights

History: The Ancient Egyptians – We will look at the Egyptian civilisation, focussing on the period between the time of the first pharaoh around 3100 BC to the Roman invasion in 31BC, when Egypt became part of the Roman Empire. Across the unit we will look at the impact of particular people and events as well as broader themes of significance, achievements, chronology and legacy. There will also be an emphasis on allowing the children to consider sources of evidence that form our understanding of this period of history and to make links to modern times.

Geography: We will be looking at the water cycle and how rivers are formed.

Music: We will prepare for our May Music Festival and the Queen's Jubilee as well as continuing our learning with West Sussex Music Service. This term we are learning how to play the recorders.

Art: We will be painting different media in the form of hieroglyphics and focusing on the artist Alaa Awad.

Design: Using knowledge from our history lessons, we will design a pyramid structure that will have to pass three stability tests.

Please remember...

English and Maths Homework

- **Set** on a **Friday** on **Google Classroom**.
- **Turned in** on a **Thursday** on **Google Classroom**.
- **Reading Diaries** are checked on a **Thursday**. Your child should be reading to an adult or independently, at least three times a week.



Maple Staff

Miss M Brown (Class Teacher)

Mrs J Younger (Learning Support)

Mrs F Knight (French Teacher on a Thursday)

Mrs J Bowbrick (HLTA on a Thursday PM)

Mrs K Talbot (PE Teacher SGS)

Mrs H Lamb (PE Teacher SGS)

Key Dates

2/5/22 Bank Holiday

27/5/22 Jubilee Celebrations and May Music Festival

30/5/22 Half Term Holiday

6/6/22 INSET Day

16/6/22 Internet Safety Day 2

4/7/22 INSET Day

8/7/22 Annual School Reports go home

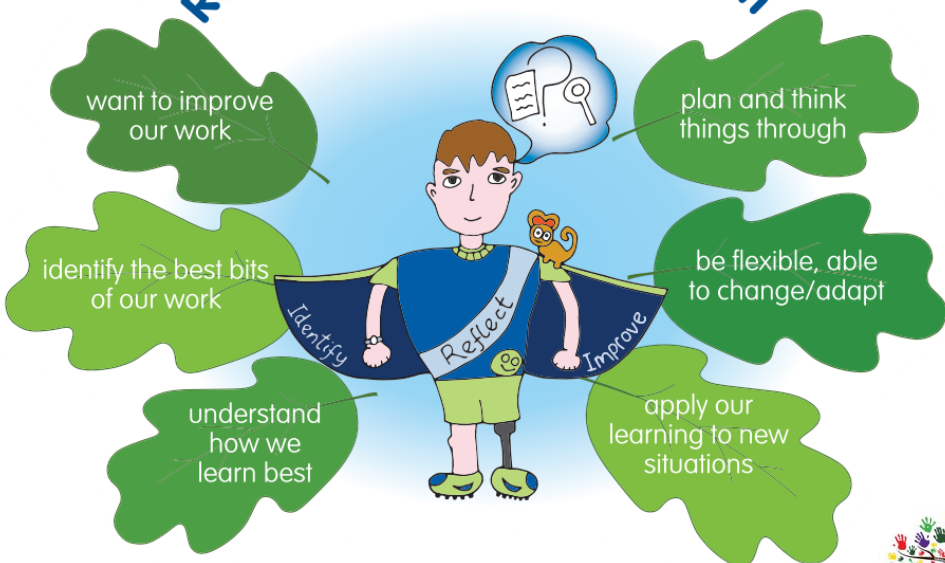
11/7/22 – 15/7/22 Sports' Week

15/7/22 Sports Day

22/7/22 Summer Holidays

Reflective, Renewing Rowan

Who helps us to:



Curious, Questioning Cleo

Who helps us to:



Positive, persevering Perry

Who helps us to:



Co-operative, Caring Chloe

Who helps us to:

